



**DTK 50 Pt.No. 1003**

**DTK 80 Pt.No. 1004**

(Pt.No.2400-1520 Issue 10, March 2020)

## **SAFETY PRECAUTIONS**

### **AN IMPORTANT MESSAGE FOR OWNERS & OPERATORS OF SPRAY TANKS AND OTHER APPLICATING EQUIPMENT**

Be warned of the dangers of loading your ATV or other vehicle in excess of its carrying capacity.

It is important to understand that any loads or attachments whether fastened to or placed on a vehicle or ATV will alter the stability or handling characteristics of that vehicle or ATV.

Spray tanks or other equipment must be filled only to a level where the gross weight is within the load limit of the ATV or other vehicle.

Safety is a primary concern in the design, manufacture, sale, and use of spray tanks and other equipment. As manufacturers of spray tanks and other equipment we want to confirm to you, our customers, our concern for safety. We take this opportunity to remind you about the simple, basic and common sense rules of safety when using spray tanks and other equipment. Failure to follow these rules can result in severe injury or death to operators and bystanders.

It is essential that everyone involved in the assembly, operation, transport, maintenance and storage of this equipment be aware, concerned, prudent and properly trained in safety.

This also applies to equipment that is loaned or rented to someone who has not read the owner's manual and is not familiar with the operations of applying equipment.

- NEVER EXCEED THE LOAD LIMIT CAPACITY OF THE ATV OR OTHER VEHICLE.
- PLEASE NOTE THAT FILLING THE SPRAY TANK OR OTHER EQUIPMENT COMPLETELY AND OR THE ATTACHMENT OF ADDITIONAL EQUIPMENT TO THE ATV MAY EXCEED THE ATV'S MAXIMUM LOAD CAPACITY AND IT IS NOT RECOMMENDED TO EXCEED MANUFACTURERS GUIDELINES
- CARGO SHOULD BE PROPERLY DISTRIBUTED AND SECURELY ATTACHED.
- REDUCE SPEED WHEN CARRYING CARGO OR PULLING A TRAILER OR TRAILED APPLICATING EQUIPMENT AND ALLOW GREATER DISTANCE FOR BRAKING.
- NEVER ALLOW ANYONE TO RIDE ON YOUR SPRAYER OR OTHER EQUIPMENT.
- ALWAYS FOLLOW THE INSTRUCTIONS IN THE OWNER'S VEHICLE MANUAL FOR CARRYING CARGO OR PULLING A TRAILER.
- PROPER MAINTENANCE IN LINE WITH MANUFACTURER'S RECOMMENDED MAINTENANCE PROCEDURES IS ESSENTIAL.
- BEFORE APPLYING CHEMICALS, READ THE LABEL OF THE CHEMICAL MANUFACTURER OR SUPPLIER FOR PERSONAL PROTECTIVE EQUIPMENT AND OPERATE AS RECOMMENDED.
- THE SAFETY OF ALL CHEMICALS USED IN AGRICULTURE IS UNDER THE JURISDICTION OF A GOVERNMENT AGENCY, IE N.Z. MINISTRY FOR THE ENVIRONMENT; USA ENVIRONMENTAL PROTECTION AGENCY. FURTHER LOCAL GOVERNMENT OR STATE LAWS MAY APPLY.

Throughout this manual there are highlighted text boxes containing warnings, cautions and notes.

**Warnings** are mandatory instructions to prevent serious injury or permanent damage.

**Cautions** are advisory instructions to ensure reliable operation of the equipment.

**Notes** are for convenient operation.

### **NOTE**

To calculate the gross weight of your sprayer, the conversion rate is 1L of water equals 1Kg.

## **WARRANTY**

### **1 WARRANTY AND LIABILITY**

#### **Use of the equipment**

- 1.1 You must satisfy yourself as to the suitability of the equipment for your intended use(s) of the equipment.

#### **Your relationship with the retailer**

- 1.2 Where you consider you have a warranty claim (or any other claim) in relation to the equipment, you must contact the retailer who sold you the equipment, not C-Dax directly. The retailer is responsible for liaising with C-Dax in respect of your claim.

#### **Warranty**

- 1.3 C-Dax warrants to the original purchaser that the equipment is sold free from defects in materials and workmanship for a period of 12 months from date of first retail sale (6 months from date of first retail sale if the equipment is sold in the U.K.) subject to the terms set out below.
- 1.4 C-Dax will at its option repair or replace the defective equipment (or part of the equipment) or notify the retailer of the equipment to refund the purchase price for such defective equipment to you in the event of a breach of this warranty, subject to the terms set out below.

#### **Liability**

- 1.5 Except for the warranty set out in clause 1.2 above, all warranties and representations (including those expressed or implied by law) in respect of the equipment or advice relating to the equipment provided to you by C-Dax are excluded to the extent permitted by law.
- 1.6 Notwithstanding anything else in this manual, C-Dax's maximum liability to you (in the event that such liability exists) in respect of any breach of warranty, any matter set out in this manual, or for defective equipment or advice relating to the equipment provided is limited at C-Dax's option to:
- (a) repairing or replacing the equipment (or part of the equipment); or
  - (b) notifying the retailer of the equipment to refund the price for the equipment paid by you.
- 1.7 Notwithstanding anything else in this manual, in no event will C-Dax be liable, whether in contract, tort (including negligence) or otherwise:
- (a) where you have altered or modified the equipment, misused or misapplied the equipment, or the equipment has been subjected to any unusual, excessive or non-recommended use, service or handling (including as set out in this manual);
  - (b) where the equipment is not transported, stored, handled or used in accordance with any directions given by C-Dax (or the retailer) to you (including as set out in this manual);
  - (c) where the equipment:
    - (i) has been subject to neglect, accident or hireage, or the damage arises from fair wear and tear, battery damage or chemical attack;
    - (ii) has been built to a customer's specifications; or

- (iii) has been dismantled, repaired or serviced other than by an authorised service agent of C-Dax;
  - (d) for loss or damage caused by any factors beyond C-Dax's control; or
  - (e) for any loss of profit or revenue, or for any special, indirect, incidental or consequential damage, loss or injury of any kind suffered by you.
- 1.8 Where C-Dax elects to repair or replace the equipment it will use reasonable endeavours to do so as soon as practicable but will not be liable for any delay in doing so.
- 1.9 You agree that the transactions entered into between you and the retailer (and C-Dax) are for the purposes of trade and that, having regard to all relevant circumstances of the transactions, it is fair and reasonable that the provisions of the Consumer Guarantees Act 1993 (NZ) do not apply to those transactions to the fullest extent permitted by law.

## DESCRIPTION

The Dual Tank Kit (DTK) allows a second tank (50 litre or 80 litre) to be coupled to a Sprayrider™ G2 (50 litre or 80 litre). The DTK does not include a pump or any internal hoses. The DTK tank is connected to the Sprayrider™ G2 tank by two short hoses between the valves at the base of each leg. The DTK50 can mount to either front or rear on most ATV's.

## WARNING

C-Dax cares about your safety. Please note that the DTK80 is for rear mounting only.  
Always consult vehicle carrier weight limits before mounting

## CONTENTS

Description	Quantity
Tank assembly complete with lid, filter and freshwater tank	1
13mm Delivery Hose	3m
Strap-Ratchet-SR50/80	1
Clamp-Hose-H-NYBK	8
Hose Shank-13mm-Brass	4
Quick Coupler-1/4BSPM-Brass	4
13mm-2-Way-Valve-NYBK	2

## INSTALLATION

1. Mount the Sprayrider™ G2 tank and the DTK tank onto the ATV carriers.
2. Ensure the Sprayrider™ G2 is empty.
3. Using a ring spanner or socket, unscrew the four plugs in the bottom of the valves at the base of each leg of the tanks.
4. Screw in and tighten the four brass quick couplers supplied (see photo below) **DO NOT OVER TIGHTEN BRASS COUPLER**, should be just over finger tight.
5. Should leaking occur around the thread - unscrew the quick release coupler and re-fit using Loctite thread sealant 5331.
6. With the quick release couplers secured in place the tanks are now ready to be connected.

## NOTE

Thread tape is not recommended on plastic fittings.

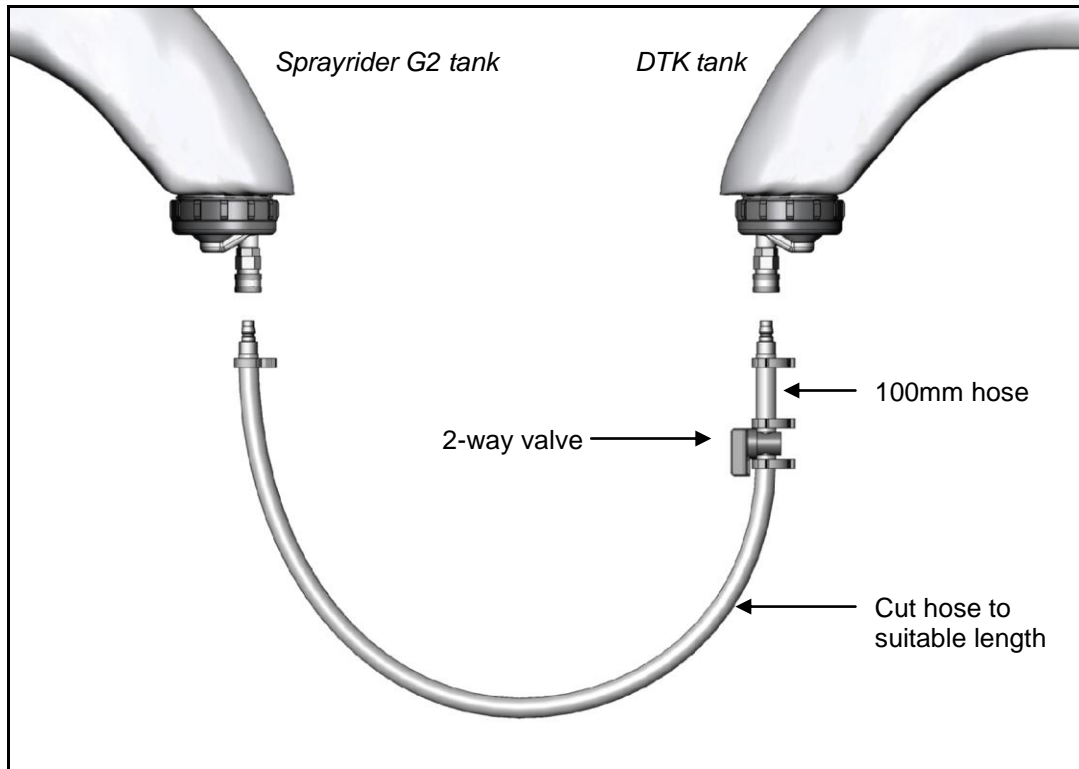
## NOTE

If your Sprayrider™ G2 valves do not have a plug screwed into the bottom cap please contact C-Dax LTD – Freephone 0800 230 230.



Brass quick coupler installation

8. Cut the 13mm hose provided into four lengths (see diagram below):
  - 2 lengths 100mm long
  - 2 lengths suitable to join the two tank valves together
9. Place a 2-way valve between a short piece of hose and a long piece. Fit a brass hose shank into each end of this hose assembly and secure valves and shanks with the plastic hose clamps provided. Repeat this step for the other side.
10. Connect each nozzle to the quick release coupler on the bottom of each tank valve.



Hose setup

When used on steep terrain, there may be a tendency for the lowest tank to leak slightly through the lid. To prevent this from happening, close the 2-way valves and empty the tank with the pump installed first. Once this tank is empty, open the 2-way valves and continue spraying. In flat conditions there is no need to close the valves at any stage.

### OPERATING INSTRUCTIONS

1. With both tanks mounted securely to the ATV carriers, fill the tanks with spray fluid.
2. Lift the Vacuum Release Valve on the Sprayrider™ G2 tank for 4-5 seconds to ensure that the tank valves have opened, make sure valve is completely sealed before start of spraying.
3. Switch the pump on and operate the spray gun until all air is expelled from the system. Your system is now ready to operate.

#### NOTE

During normal operation, fluid will be drawn from the Sprayrider™ tank first then from the DTK tank. Chemical should therefore be evenly poured into both tanks.

### MAINTENANCE

#### Cleaning

It is important to clean the sprayer regularly. After each use flush the unit out three times with fresh water. Use C-Dax neutralise for the second rinse.

#### CAUTION

To prevent damage to the sprayer and spray gun, drain the water from the sprayer and spray gun when there is a risk of frost.

## Filters

There are three filters in the DTK fluid system. Each one must be checked and cleaned after each use.

The tank strainer is located under the lid. Always clean the strainer before filling the tank with spray solution.

The C-Dax valve assembly at the base of each leg has a stainless steel mesh filter for straining the fluid before it reaches the pump.

Unscrew the cap at the base of each leg and remove the valve from the tank for cleaning. Take care not to lose the O-ring.

Carefully rinse each stainless steel mesh with a hose.



### CAUTION

To avoid damage to the filter mesh, do not attempt to remove the mesh from the valve assembly. Do not use excessive pressure when cleaning the valve and filter mesh.

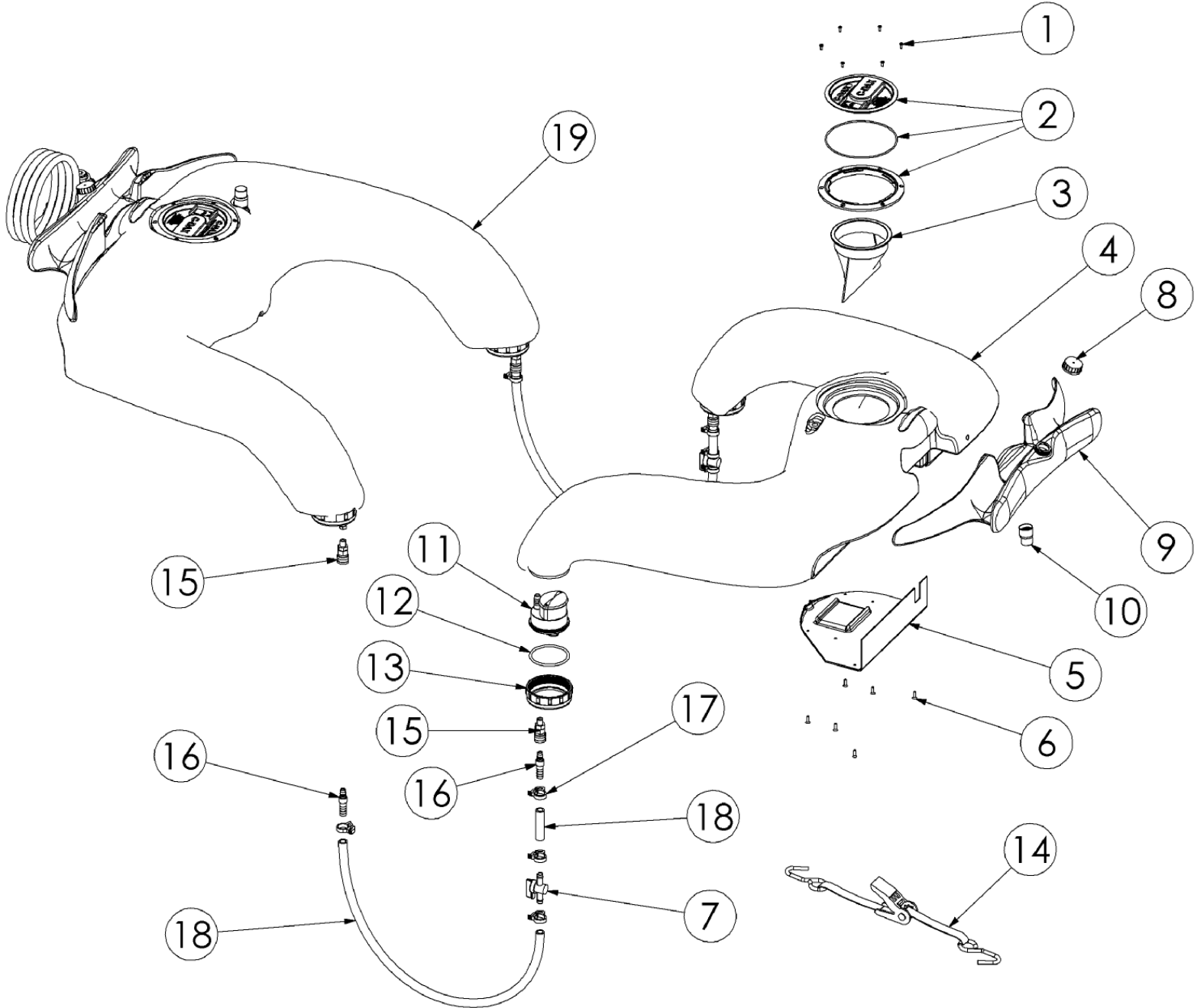
## REMOVING THE DTK UNIT

To remove the DTK:

1. Unplug the suction hoses from the bottom of each valve.
2. Release the ratchet strap.
3. Lift the DTK off the vehicle.

Place the tank on a suitable support so that the legs do not have to support the weight of the tank. The tank can be conveniently hung on a wall using a loop of string around the centre of the tank.

EXPLODED PARTS DIAGRAM



**EXPLODED PARTS DIAGRAM**

ITEM No	PART No	DESCRIPTION	QTY
1	3270-8012	Fastener-Self Tap-Screw-CSK-8Gx1/2"-Pozi-Stainless	6
2	8427-6005	Sub-Lid & Ring Assembly-D150-C-Dax Vented-Blue-Nylon	1
3	3400-1110	Filter-Basket-D150-Mesh	1
4	7500-3400	Rota-Tank-50L-DTK-Yellow-MDPE-Incl MIG	1
	7500-3850	Rota-Tank-80L-DTK-Yellow-MDPE-Incl MIG	1
5	7500-1500	Rota-Cover-Pump-SR50/80-Yellow-MDPE	1
6	3090-0512	Fastener-Machine-Screw-Pan-M5x12-Phillips-Stainless	6
7	8900-8410	Valve-Tap-Inline-13 Shankx13 Shank-Black-Nylon	2
8	1600-7000	Cap-Tank-Fresh Water-UnDrilled-Black	1
9	7500-5100	Rota-Tank-Rinse-Sprayrider-Blue-MDPE	1
10	8900-8580	Valve-Water Bottle-Sipper Cap-Bottle thread-Plastic	1
11	8427-9700	Sub-Valve Assembly-Suction QR-Dual Tank Kit 50/80	2
12	5450-2370	ORing-Imperial-1/8"x3 1/4"-N70	2
13	3400-5500	Filter-Nut-Bowl-Arag-Series 312 & 314-Nylon	2
14	8410-8450	Strap-Tie Down-Ratchet-Blue	1
15	6200-7240	Pipe-Fitting-Quick Release-Valve-1/4BSPM-Brass	4
16	6200-7230	Pipe-Fitting-Quick Release-Male Connectorx13 Shank-Brass	4
17	2000-0018	Clamp-Hose-Herbi-H-Ratchet-18.1<>20.6mm-Black-Nylon	8
18	4100-0013	Hose-Spray-Delivery-40 Bar-13mm ID-Yellow	3m
19	N/A	Sprayrider™ G2	Not supplied in DTK kit