



GOLDLINE BOOM SUSPENSION
(Pt.No.2400-0840 Issue 5, October 2015)

DESCRIPTION

The C-Dax GoldLine Boom Suspension Kit is an accessory for the C-Dax range of 6, 8, 10, and 12 metre pressure nozzle spray booms, including the GoldLine and i-Boom range.

The suspension kit mounts between the boom and any C-Dax three-point linkage sprayer frame, and uses a central pivot point and compression springs mounted either side of the pivot to absorb low frequency boom vibrations.

SPECIFICATIONS

Frame	Zinc Plated Steel
Suspension	Dual Compression Springs
Dampening	Adjustable guides
Suspension Lock	Manually operated catch
Boom range	6-12M

ORDER INFORMATION

Boom Suspension Frame	Part No: 1055
-----------------------	---------------

WARRANTY

1 WARRANTY AND LIABILITY

Use of the equipment

- 1.1 You must satisfy yourself as to the suitability of the equipment for your intended use(s) of the equipment.

Your relationship with the retailer

- 1.2 Where you consider you have a warranty claim (or any other claim) in relation to the equipment, you must contact the retailer who sold you the equipment, not C-Dax directly. The retailer is responsible for liaising with C-Dax in respect of your claim.

Warranty

- 1.3 C-Dax warrants to the original purchaser that the equipment is sold free from defects in materials and workmanship for a period of 12 months from date of first retail sale (6 months from date of first retail sale if the equipment is sold in the U.K.) subject to the terms set out below.
- 1.4 C-Dax will at its option repair or replace the defective equipment (or part of the equipment) or notify the retailer of the equipment to refund the purchase price for such defective equipment to you in the event of a breach of this warranty, subject to the terms set out below.

Liability

- 1.5 Except for the warranty set out in clause 1.2 above, all warranties and representations (including those expressed or implied by law) in respect of the equipment or advice relating to the equipment provided to you by C-Dax are excluded to the extent permitted by law.
- 1.6 Notwithstanding anything else in this manual, C-Dax's maximum liability to you (in the event that such liability exists) in respect of any breach of warranty, any matter set out in this manual, or for defective equipment or advice relating to the equipment provided is limited at C-Dax's option to:
- (a) repairing or replacing the equipment (or part of the equipment); or
 - (b) notifying the retailer of the equipment to refund the price for the equipment paid by you.
- 1.7 Notwithstanding anything else in this manual, in no event will C-Dax be liable, whether in contract, tort (including negligence) or otherwise:
- (a) where you have altered or modified the equipment, misused or misapplied the equipment, or the equipment has been subjected to any unusual, excessive or non-recommended use, service or handling (including as set out in this manual);
 - (b) where the equipment is not transported, stored, handled or used in accordance with any directions given by C-Dax (or the retailer) to you (including as set out in this manual);
 - (c) where the equipment:
 - (i) has been subject to neglect, accident or hireage, or the damage arises from fair wear and tear, battery damage or chemical attack;
 - (ii) has been built to a customer's specifications; or

(iii) has been dismantled, repaired or serviced other than by an authorised service agent of C-Dax;

(d) for loss or damage caused by any factors beyond C-Dax's control; or

(e) for any loss of profit or revenue, or for any special, indirect, incidental or consequential damage, loss or injury of any kind suffered by you.

1.8 Where C-Dax elects to repair or replace the equipment it will use reasonable endeavours to do so as soon as practicable but will not be liable for any delay in doing so.

1.9 You agree that the transactions entered into between you and the retailer (and C-Dax) are for the purposes of trade and that, having regard to all relevant circumstances of the transactions, it is fair and reasonable that the provisions of the Consumer Guarantees Act 1993 (NZ) do not apply to those transactions to the fullest extent permitted by law.

INSTALLATION **(If not factory fitted)**

Unpack the unit and ready the components for installation, the following components are included in the kit:

- Suspension unit complete
 - M12 x 40 mounting screws (4)
 - M12 nyloc nuts (4)
- Remove the spray boom from the sprayer frame; retain the fasteners for later use. If possible leave the boom delivery hoses connected.
 - Position the suspension frame between the boom and the sprayer frame, mounting to the sprayer frame using the M12 x 40 screws and nyloc nuts provided with the suspension kit into the existing mounting holes used by the boom.

NOTE

The suspension frame should be fitted with the lock bracket on the left hand side of the vehicle, and nearest to the sprayer frame.

The diagram on the last page shows the orientation of the suspension frame as viewed from standing behind the tractor.

- Remount the boom to the mounting holes on the rear of the suspension frame, using the original boom mounting fasteners.
- If the boom supply hoses have to be disconnected during fitting of the suspension frame, re-route and reconnect the hoses to the boom.
- Tighten the suspension frame and boom mounting bolts securely.
- Raise the sprayer frame to the normal operating height, and unfold the spray boom.
- Unlock the lock bracket and push down on the end of the outer section of the spray boom, ensure the spray boom pivots about the centre pivot pin.
- Check to ensure that all plumbing is secure and will not interfere with the pivoting of the suspension frame.
- Lock the lock bracket for folding, transport, and storage.

CAUTION

To prevent damage by pinching or stretching the hydraulic hoses, ensure when fitting a suspension frame to a boom with hydraulic rams and hoses that the suspension frame does not make the hoses too short.

OPERATION

NOTE

The boom suspension frame is intended to be used once the spray boom is folded out for spraying. During folding, transport and storage, the suspension frame should remain in the locked position.

- Unfold spray boom into normal spraying position.
- Unlock the lock bracket allowing the suspension to operate freely.

- Proceed with spraying as normal, the suspension will operate by itself, and reduce the shock transmitted between the sprayer frame and the spray boom.
- Once spraying has been completed, place the lock bracket into the locked position and proceed with folding the boom into the transport position.

ADJUSTMENTS

The boom suspension frame has a number of adjustments designed to allow the operator to tune the unit to suit their sprayer.

The adjustments are as following:

Boom Height

The boom height can be adjusted by mounting the suspension unit to the rear of the sprayer frame using the mounting holes and fasteners supplied. The boom height is determined by the type of spray tip fitted and the required height above the target to be sprayed. Check your spray tip chart for this information.

Pivot Spring Tension

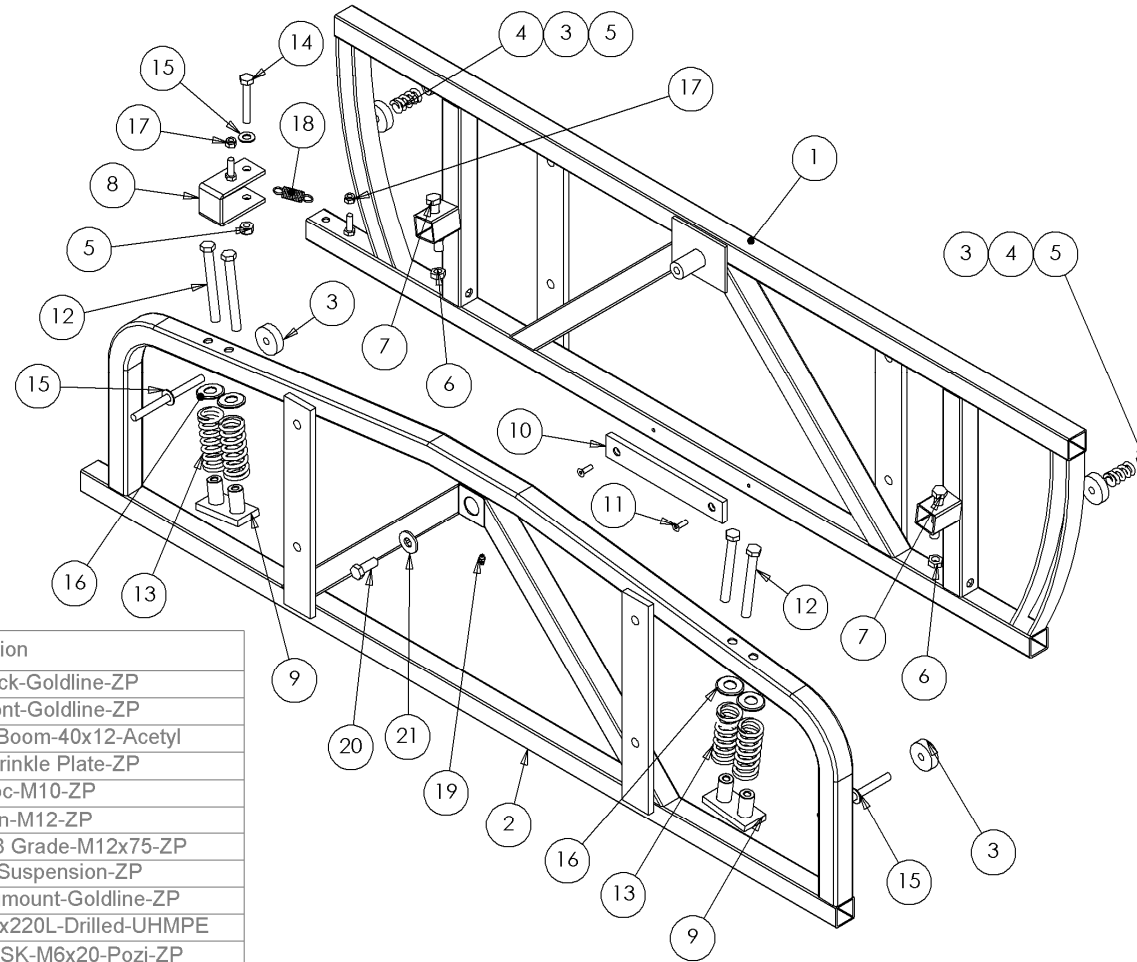
The spring tension can be increased or decreased to allow less or more suspension movement for the spray boom. To adjust the spring tension, increase or decrease the spring tension on the two spring mount bolts on the top of the rear frame. The adjustable stop under the springs will also have to be adjusted to stop free play of the boom.

Horizontal Spring Tension

The boom, when operating over rough ground will try to move the outer arms back and forward as well as pivoting up and down with the suspension unit. This backward and forward movement is controlled by nylon guides on either side of the suspension unit. This can be adjusted by increasing or decreasing the spring tension on the nylon guides on either side of the suspension unit.

Do not over tighten the nylon guides or this will prevent the boom suspension from operating at all.

PARTS DIAGRAM



Item No.	QTY.	e9 part no	e9 description
1	1	3500-6100	Frame-Suspension-Back-Goldline-ZP
2	1	3500-6200	Frame-Suspension-Front-Goldline-ZP
3	4	9100-3650	Washer-Glide-Suspension Boom-40x12-Acetyl
4	2	8250-1800	Spring-Compression-Crinkle Plate-ZP
5	3	3170-0010	Fastener-Nut-Nyloc-M10-ZP
6	2	3180-0012	Fastener-Nut-Plain-M12-ZP
7	2	3290-1275	Fastener-Set Screw-Hex-8.8 Grade-M12x75-ZP
8	1	1300-5100	Bracket-Lock-Goldline-Suspension-ZP
9	2	1300-8100	Bracket-Suspension-Springmount-Goldline-ZP
10	1	2700-0800	Fabricated-Plastic-Strip-10x35x220L-Drilled-UHMPE
11	2	3080-0620	Fastener-Machine-Screw-CSK-M6x20-Pozi-ZP
12	4	2840-2110	Fastener-Bolt&Nut-Hex-8.8 Grade-M12x110-ZP
13	4	8250-1710	Spring-Compression-Boom-SL-ZP
14	1	2840-1065	Fastener-Bolt&Nut-Hex-8.8 Grade-M10x65-ZP
15	4	3310-6010	Fastener-Washer-Flat-M10-ZP
16	4	3310-0016	Fastener-Washer-Cup-M16-Pressed-ZP
17	2	3170-0008	Fastener-Nut-Nyloc-M8-ZP
18	1	8250-7300	Spring-Tension-2x15x55 Long-With Loop Ends-ZP
19	1	5270-0003	Nipple-Grease-Straight-Short-M6-ZP
20	1	3290-1230	Fastener-Set Screw-Hex-8.8 Grade-M12x30-ZP
21	1	3310-5012	Fastener-Washer-Flat-Heavy-M12x32x3-Galv